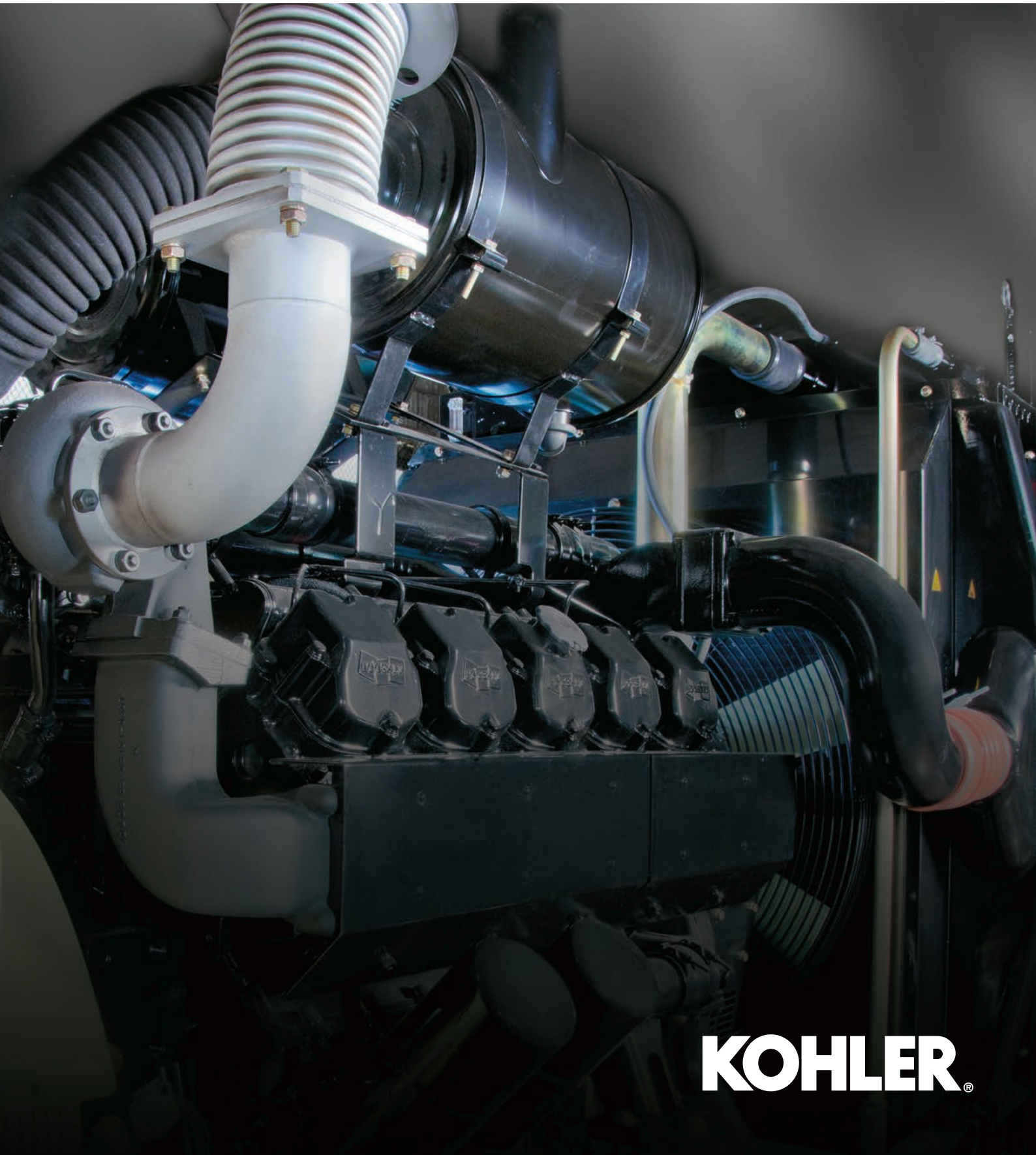


INTERNATIONAL SPEC SERIES

for Industrial Power Systems

8 kVA – 825 kVA | 8 kW – 760 kW



KOHLER®

SINCE **POWER IS WHAT WE DO.** *1920*

For 100 years, Kohler has earned a global reputation as a pure power expert — in large part to our strict quality standards. Our power systems are equipped with Kohler innovation, including generators, transfer switches, switchgear and controllers. Enduring the industry's toughest testing process, including transient power testing, cooling sound and more, every part is built to work with the entire system and perform in the most demanding environments before they are shipped out.

Our power systems are built for nearly every application, powering everything from data centers and hospitals to water treatment facilities and government offices. So you can be rest assured that our products will work when you need them most.



TABLE OF CONTENTS

International Spec Series	4
Sound Enclosures	5
Service & Support	6
Specifications	
KM Series	7
KK Series	8
KD Series	10
KV Series	12
KH Series	13
Standard Features and Options	14
Generator Set Controls	16
APM303	17
APM403	18
APM802	19
Automatic Transfer Switches	20
Kohler Genuine Parts	21

INTERNATIONAL SPEC SERIES

Comprehensive and Reliable

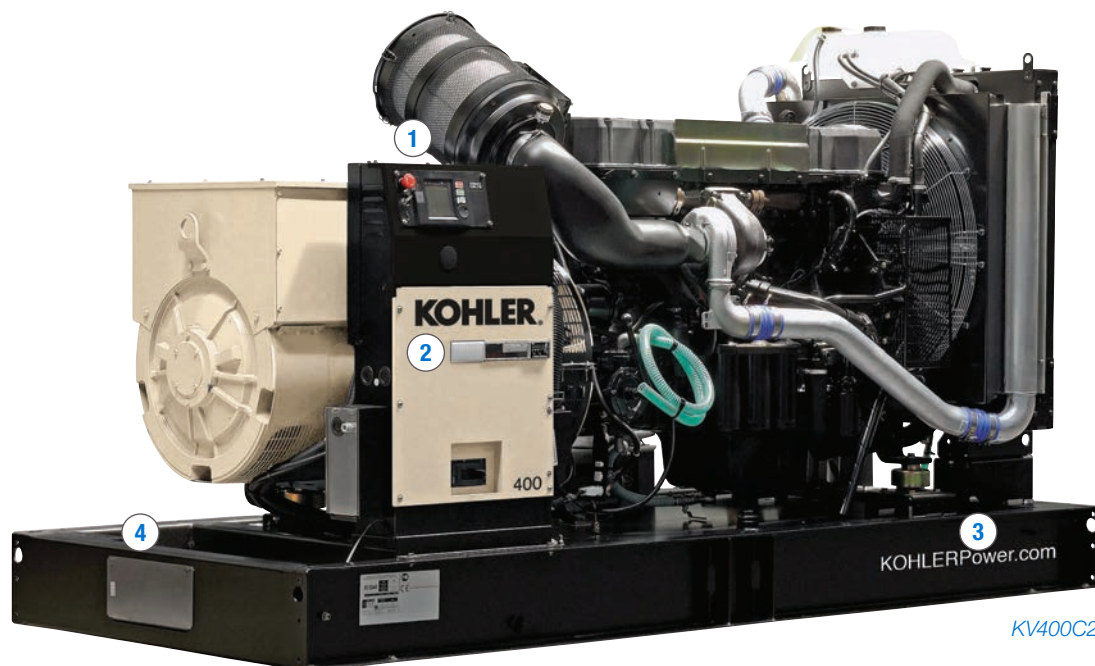
8-825 kVA
8-760 kW

COMPREHENSIVE RANGE FOR EVERY POWER REQUIREMENT

Reliable, compact, user-friendly and versatile, the International Spec Series generators are built to offer dependable power for all applications (simple to complex), including healthcare, data centers, airports and more.

These diesel generators are available in a wide range of power outputs, from 6 kVA to 825 kVA, and can be customized to your specific needs.

They are compatible with a variety of additional options and accessories that are offered to further enhance performance and deliver the best user experience.



1 KOHLER CONTROLS

Available with a variety of controls – basic, advanced and paralleling, dedicated to generator set applications for optimal performance

2 CIRCUIT BREAKER

Offers protection and maintenance of generator

3 INTEGRATED FUEL-TANK

Integrated with generator skid that provides plug-and-play mode for quick on-site set up

4 OPTIONS AND ACCESSORIES

Improved alternators, heavy-duty air cleaners, enclosures, fuel tanks, block heaters, multiple circuit breakers, heat-hand protection (CE)^ and more (Refer to page 14 for more information)

^ For selected models only. Please check with your sales representative on availability

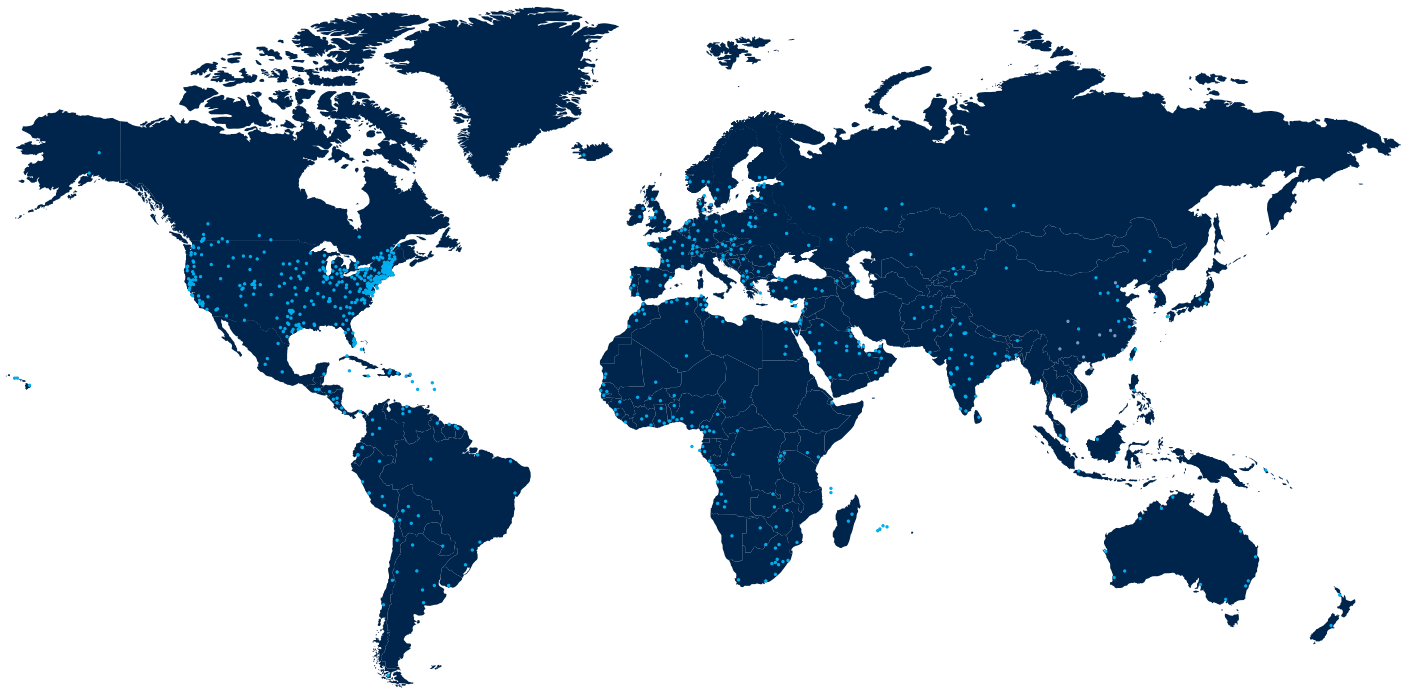


Built for reliability with self-diagnostic features, Kohler generators come equipped with sound enclosures and integrated fuel tanks.

GENERAL SPECIFICATIONS

- Assembled soundproofing enclosures
- Kohler cream beige standard colour
- Rust-resistance : Electro-galvanized steel panels coated with heat-hardening powder based on polyester resin as a form of rust protection.
- High corrosion resistance for enclosure parts and fixtures
- Acoustic sound treatment : Soundproofing and fire-retardant foam between 20-50mm thickness
- Silent operation: High priority on noise reduction and conforms to 2000/14/EC noise emission standards
- Modularity: Modular design without complex installation; maintenance and re-ordering of components now made simpler and hassle-free
- Integrated fuel tank in generator skid
- Power circuit break

- ① **PLUG-AND-PLAY**
 - No need for complex installation and messy cabling
 - Shipped ready-to-use, ensuring seamless and efficient integration into your power system
- ② **MOBILITY**
 - Availability of lifting and handling points to facilitate easy transportation
 - Minimal effort in installation required
 - Rapid deployment when rendering back-up power
- ③ **SILENT OPERATION**
 - Sound-attenuating enclosures that are quiet and rigorously tested
- ④ **OUTDOOR INSTALLATION**
 - Allow for more productive use of space with outdoor installation
 - Cost-savings



SERVICE AND SUPPORT

The help you need. Anytime, anywhere.

You're never too far from Kohler. Across the world, more than 800 locations are ready to provide sales, installation and aftermarket support services. And each one offers expertise in power specifications, equipment and integration. There's no question they can't answer. We should know, we trained them ourselves.

Plus, if you ever need assistance in the middle of the night, we'll take care of you. Kohler Power professionals are available to offer troubleshooting, advice, service and support.

SPECIFICATIONS

KM SERIES

10-16 kVA
10-16 kW



Unhoused Version - KM12



Soundproofed Version - KM16UM

THREE-PHASE – UNHOUSED VERSION													
50 Hz, 230/400 V				60 Hz, 277/480 V				General					
Models ⁽¹⁾	kVA		Fuel Consumption At 75% Load, L/h	Models ⁽¹⁾	kWe		Fuel Consumption At 75% Load, L/h	Engine			Unhoused Version ⁽⁵⁾		
	Prime ⁽³⁾	Standby ⁽⁴⁾			Prime ⁽³⁾	Standby ⁽⁴⁾		Types	Cyl	CC, L	Dimensions, L x W x H, m	Weight, kg ⁽⁶⁾	Fuel Tank, L
KM12	10.5	11.5	2.5	KM11U	10.2	11.2	3.2	S3L2-SD	3	1.3	1.41 x 0.72 x 1.05	387	50
KM16	14.5	16	3.4	KM16U	14.6	16	4.2	S4L2-SD	4	1.8	1.41 x 0.72 x 1.05	406	50

THREE-PHASE – SOUNDPROOFED VERSION												
Models ⁽¹⁾		Soundproofed Version				Enclosures With Double Wall Base Frame			Sound Levels, 50 Hz		Sound Levels, 60 Hz	
50 Hz	60 Hz	Types	Fuel Tank, L	Dimensions, L x W x H, m	Weight, kg	Fuel Tank, L	50 Hz, h Maximum Run Time	60 Hz, h Maximum Run Time	dB(A) @ 1m	dB(A) @ 7m	dB(A) @ 1m	dB(A) @ 7m
KM12	KM11U	M126	50	1.75 x 0.78 x 1.23	530	93	37.2	29.1	71	58	73	63
KM16	KM16U	M126	50	1.75 x 0.78 x 1.23	554	93	27.4	22.1	71	59	74	64

(1) Also available in the following voltages: 240/415 V, 220/380 V, 127/220 V, 115/200 V.

(2) Also available in the following voltages: 254/440 V, 127/220 V, 120/208 V.

(3) Prime power in direct current for an unlimited number of annual operating hours in variable load applications, in accordance with ISO8528-1, a 10% overload capacity is available for a period of 1 hour every 12-hour period of operation, in accordance with ISO3046-1.

(4) Emergency standby power available for supplying emergency power in variable load applications in accordance with ISO8528-1, no overload available for this service.

(5) The dimensions and weights apply to an open generator set without options.

(6) Dry weight, without fuel.

SPECIFICATIONS

KK SERIES

8-66 kVA
8-59 kW



Unhoused Version - KK16U



Unhoused Version - KK27

THREE-PHASE – UNHOUSED VERSION													
50 Hz, 230/400 V				60 Hz, 277/480 V				General					
Models ⁽¹⁾	kVA		Fuel Consumption At 75% Load, L/h	Models ⁽¹⁾	kWe		Fuel Consumption At 75% Load, L/h	Engine			Unhoused Version ⁽⁵⁾		
	Prime ⁽³⁾	Standby ⁽⁴⁾			Prime ⁽³⁾	Standby ⁽⁴⁾		Types	Cyl	CC, L	Dimensions, L x W x H, m	Weight, kg ⁽⁶⁾	Fuel Tank, L
KK9	8.1	8.9	1.9	KK9U	7.6	8.4	2.3	KDW1003	3	1.0	1.22 x 0.70 x 0.92	290	50
KK12	10.9	12	2.5	KK12U	10.6	11.6	2.9	KDW1404	4	1.4	1.41 x 0.72 x 1.02	340	50
KK12C5	9.5	10.5	2.2	-	-	-	-	KDW1404	4	1.4	1.41 x 0.72 x 1.02	340	50
KK20C5	18.2	20	3.7	-	-	-	-	KDI1903M-EV5	3	1.9	1.41 x 0.72 x 1.08	490	50
KK22	19.5	21.5	3.3	KK20U	17.3	19	4.2	KDI1903M	3	1.9	1.41 x 0.72 x 1.08	490	50
KK27	24.1	26.5	4.4	KK25U	22.6	24.8	5.6	KDI2504M	4	2.5	1.41 x 0.72 x 1.08	540	50
KK33	30	33	5.9	-	-	-	-	KDI2504TM-30	4	2.5	1.70 x 0.90 x 1.20	568	100
KK33C3	30	33	5.7	-	-	-	-	KDI2504TM-30-EU	4	2.5	1.70 x 0.90 x 1.20	568	100
KK44	40	44	7.1	-	-	-	-	KDI2504TM-40	4	2.5	1.70 x 0.90 x 1.20	597	100
KK44C3	40	40	7.3	-	-	-	-	KDI2504TM-40-EU	4	2.5	1.70 x 0.90 x 1.20	597	100
KK66	60	66	11.3	KK60U	54	59	12.8	KDI3404TM	4	3.4	1.70 x 0.90 x 1.17	781	100

(1) Also available in the following voltages: 240/415 V, 220/380 V, 127/220 V, 115/200 V.

(2) Also available in the following voltages: 254/440 V, 127/220 V, 120/208 V.

(3) Prime power in direct current for an unlimited number of annual operating hours in variable load applications, in accordance with ISO8528-1, a 10% overload capacity is available for a period of 1 hour every 12-hour period of operation, in accordance with ISO3046-1.

(4) Emergency standby power available for supplying emergency power in variable load applications in accordance with ISO8528-1, no overload available for this service.

(5) The dimensions and weights apply to an open generator set without options.

(6) Dry weight, without fuel.

* Available in 120/208 V only.

** Available in 120/208 V and 127/220 V.



Soundproofed Version - KK27



Soundproofed Version - KK9

THREE-PHASE – SOUNDPROOFED VERSION												
Models ⁽¹⁾		Soundproofed Version				Enclosures With Double Wall Base Frame			Sound Levels, 50 Hz		Sound Levels, 60 Hz	
50 Hz	60 Hz	Types	Fuel Tank, L	Dimensions, L x W x H, m	Weight, kg	Fuel Tank, L	50 Hz, h Maximum Run Time	60 Hz, h Maximum Run Time	dB(A) @ 1m	dB(A) @ 7m	dB(A) @ 1m	dB(A) @ 7m
KK9	KK9U	M125	50	1.48 x 0.76 x 1.03	390	-	-	-	67	54	74	64
KK12	KK12U	M126	50	1.75 x 0.78 x 1.23	510	93	37.2	32.1	66	54	74	64
KK12C5	-	M126	50	1.75 x 0.78 x 1.23	510	93	42.3	-	66	54	-	-
KK20C5	-	M126	50	1.75 x 0.78 x 1.23	660	93	25.1	-	71	58	-	-
KK22	KK20U	M126	50	1.75 x 0.78 x 1.23	660	93	28.2	22.1	71	58	77	67
KK27	KK25U	M126	50	1.75 x 0.78 x 1.23	710	93	21.1	16.7	76	63	78	68
KK33	-	M137	100	2.10 x 0.94 x 1.29	756	240	40.7	-	75	63	-	-
KK33C3	-	M137	100	2.10 x 0.94 x 1.29	756	240	42.1	-	75	63	-	-
KK44	-	M137	100	2.10 x 0.94 x 1.29	785	240	33.8	-	76	64	-	-
KK44C3	-	M137	100	2.10 x 0.94 x 1.29	785	240	32.9	-	76	64	-	-
KK66	KK60U	M137	100	2.10 x 0.94 x 1.29	953	240	21.2	18.80	79	66	84	72

SPECIFICATIONS

KD SERIES

20-250 kVA
54-210 kW



Unhoused Version - KD88



Unhoused Version - KD110

THREE-PHASE – UNHOUSED VERSION													
50 Hz, 230/400 V				60 Hz, 277/480 V				General					
Models ⁽¹⁾	kVA		Fuel Consumption At 75% Load, L/h	Models ⁽¹⁾	kWe		Fuel Consumption At 75% Load, L/h	Engine			Unhoused Version ⁽⁵⁾		
	Prime ⁽³⁾	Standby ⁽⁴⁾			Types	Cyl		CC, L	Dimensions, L x W x H, m	Dimensions, kg ⁽⁶⁾	Fuel Tank, L		
KD22	20	22	5.5	-	-	-	-	3029DSG20	3	2.9	1.70 x 0.90 x 1.18	624	100
KD33	30	33	5.5	-	-	-	-	3029DSG20	3	2.9	1.70 x 0.90 x 1.18	629	100
KD44	40	44	7.7	-	-	-	-	3029TSG20	3	2.9	1.70 x 0.90 x 1.24	680	100
KD66	60	66	14.6	KD60U	54	60	17.7	4045TSG20	4	4.5	1.95 x 1.08 x 1.46	908	190
KD66C3	60	66	11.8	-	-	-	-	4045HFS85	4	4.5	1.95 x 1.08 x 1.39	950	190
KD88	80	88	14.6	KD80U	73	80	17.7	4045TSG20	4	4.5	1.95 x 1.08 x 1.46	980	190
KD110	100	110	17.9	KD100U	91	100	20.8	4045HSG20	4	4.5	1.95 x 1.08 x 1.45	1010	190
KD110C3	100	110	17.9	-	-	-	-	4045HFS87	4	4.5	1.95 x 1.08 x 1.46	1020	190
KD130	118	130	21.4	KD120U	108	118	24.3	4045HSG21	4	4.5	1.95 x 1.08 x 1.46	1083	190
KD165	150	165	26.1	KD150U	135	149	29	6068HF120-153	6	6.7	2.50x 1.10 x 1.52	1375	334
KD165C3	150	165	24.5	-	-	-	-	6068HFS85	6	6.7	2.50x 1.10 x 1.58	1450	334
KD200	182	200	30.6	KD175U	159	175	36.6	6068HFG20-183	6	6.7	2.50x 1.10 x 1.52	1940	334
-	-	-	-	KD210U	191	210	36.6	6068HFS55-228	6	6.7	2.50x 1.10 x 1.59	1940	334
KD220	200	220	35.2	-	-	-	-	6068HSG20-202	6	6.7	2.50x 1.10 x 1.59	1825	334
KD220C3	200	220	37.6	-	-	-	-	6068HFS86	6	6.7	2.50x 1.10 x 1.56	1745	334
KD250	227	250	35.9	-	-	-	-	6068HFS55-228	6	6.7	2.50x 1.10 x 1.59	1940	334

(1) Also available in the following voltages: 240/415 V, 220/380 V, 127/220 V, 115/200 V.

(2) Also available in the following voltages: 254/440 V, 127/220 V, 120/208 V.

(3) Prime power in direct current for an unlimited number of annual operating hours in variable load applications, in accordance with ISO8528-1, a 10% overload capacity is available for a period of 1 hour every 12-hour period of operation, in accordance with ISO3046-1.

(4) Emergency standby power available for supplying emergency power in variable load applications in accordance with ISO8528-1, no overload available for this service.

(5) The dimensions and weights apply to an open generator set without options.

(6) Dry weight, without fuel.

* Available in 120/208 V only.

** Available in 120/208 V and 127/220 V.



Soundproofed Version - KD100U
with optional 48-hour tank



Soundproofed Version - KD200

THREE-PHASE – SOUNDPROOFED VERSION

Models ⁽¹⁾		Soundproofed Version				Enclosures With Double Wall Base Frame			Enclosures With 48-Hour Tank	Sound Levels, 50 Hz		Sound Levels, 60 Hz	
50 Hz	60 Hz	Types	Fuel Tank, L	Dimensions, L x W x H, m	Weight, kg	Fuel Tank, L	50 Hz, h Maximum Run Time	60 Hz, h Maximum Run Time	Tank, L	dB(A) @ 1m	dB(A) @ 7m	dB(A) @ 1m	dB(A) @ 7m
KD22	-	M137	100	2.10 x 0.94 x 1.29	812	240	43.6	-	470	75	63	-	-
KD33	-	M137	100	2.10 x 0.94 x 1.29	817	240	43.6	-	470	75	63	-	-
KD44	-	M137	100	2.10 x 0.94 x 1.29	868	240	31.2	-	470	75	63	-	-
KD66	KD60U	M138	190	2.57 x 1.13 x 1.57	1246	500	34.2	28.2	825	78	66	81	71
KD66C3	-	M138	190	2.57 x 1.13 x 1.57	1230	500	42.4	-	825	73	62	-	-
KD88	KD80U	M138	190	2.57 x 1.13 x 1.57	1325	500	34.2	28.2	825	79	67	84	74
KD110	KD100U	M138	190	2.57 x 1.13 x 1.57	1335	500	27.9	24	825	80	68	82	72
KD110C3	-	M138	190	2.57 x 1.13 x 1.57	1345	500	27.9	-	825	77	66	-	-
KD130	KD120U	M138	190	2.57 x 1.13 x 1.57	1405	500	23.4	20.6	825	79	67	81	71
KD165	KD150U	M139	334	3.59 x 1.15 x 1.78	2198	868	33.26	29.9	1790	81	70	82	70
KD165C3	-	M139	334	3.59 x 1.15 x 1.78	2065	868	35.4	-	-	-	-	-	-
KD200	KD175U	M139	334	3.59 x 1.15 x 1.78	2230	868	28	23.7	1790	80	69	83	71
-	KD210U	M139	334	3.59 x 1.15 x 1.78	2515	868	-	23.3	1790	-	-	85	72
KD220	-	M139	334	3.59 x 1.15 x 1.78	2346	868	24.7	-	1790	79	68	-	-
KD220C3	-	M139	334	3.59 x 1.15 x 1.78	2366	868	23.1	-	-	-	-	-	-
KD250	-	M139	334	3.59 x 1.15 x 1.78	2400	868	24.2	-	1790	81	71	-	-

SPECIFICATIONS

KV SERIES

250-770 kVA
216-640 kW



Unhoused Version - KV500C2



Soundproofed Version - KV440C2

THREE-PHASE – UNHOUSED VERSION													
50 Hz, 230/400 V				60 Hz, 277/480 V				General					
Models ⁽¹⁾	kVA		Fuel Consumption At 75% Load, L/h	Models ⁽¹⁾	kWe		Fuel Consumption At 75% Load, L/h	Engine			Unhoused Version ⁽⁵⁾		
	Prime ⁽³⁾	Standby ⁽⁴⁾			Prime ⁽³⁾	Standby ⁽⁴⁾		Types	Cyl	CC, L	Dimensions, L x W x H, m	Weight, kg ⁽⁶⁾	Fuel Tank, L
KV275C2	250	275	43.5	KV250U	216	238	46.8	TAD734GE	6	7.2	2.90 x 1.30 x 1.59	2172	390
KV350C2	318	350	48.1	KV300U	273	300	54.1	TAD1341GE-B	6	12.8	3.16 x 1.34 x 1.81	3103	470
KV400C2	355	390	53.3	KV350U	318	350	64.1	TAD1342GE-B	6	12.8	3.16 x 1.34 x 1.81	3103	470
KV440C2	400	440	63	KV400U	364	400	72	TAD1344GE-B	6	12.8	3.16 x 1.34 x 1.81	3110	470
KV500C2	455	500	69.2	-	-	-	-	TAD1345GE-B	6	12.8	3.16 x 1.34 x 1.81	3250	470
KV550C2	500	550	78.2	KV500UC2	454	500	91.2	TAD1641GE-B	6	16.1	3.47 x 1.50 x 2.04	3660	500
KV550C3	500	550	79.8	-	-	-	-	TAD1651GE	6	16.1	3.47 x 1.63 x 2.10	3650	610
KV650C2	591	650	88.9	KV550UC2	500	550	98.2	TAD1642GE-B	6	16.1	3.47 x 1.63 x 2.10	3780	610
KV715C2	650	715	98.4	KV600U	546	600	108.2	TWD1644GE	6	16.1	3.47 x 1.63 x 2.05	4060	610
KV770C2	700	770	106.5	KV640UC2	582	640	114.1	TWD1645GE	6	16.1	3.47 x 1.63 x 2.05	4270	610

THREE-PHASE – SOUNDPROOFED VERSION												
Models ⁽¹⁾		Soundproofed Version				Enclosures With Double Wall Base Frame			Sound Levels, 50 Hz		Sound Levels, 60 Hz	
50 Hz	60 Hz	Types	Fuel Tank, L	Dimensions, L x W x H, m	Weight, kg	Fuel Tank, L	50 Hz, h Maximum Run Time	60 Hz, h Maximum Run Time	dB(A) @ 1m	dB(A) @ 7m	dB(A) @ 1m	dB(A) @ 7m
KV275C2	KV250U	M227	390	4.00 x 1.38 x 2.45	3102	950	21.8	20.3	77	67	84	74
KV350C2	KV300U	M228	470	4.48 x 1.41 x 2.43	4035	1368	28.4	25.3	76	67	86	76
KV400C2	KV350U	M228	470	4.48 x 1.41 x 2.43	4082	1368	25.7	21.3	76	67	86	76
KV440C2	KV400U	M228	470	4.48 x 1.41 x 2.43	4080	1368	21.7	19	78	68	86	76
KV500C2	-	M228	470	4.48 x 1.41 x 2.43	4360	1368	19.8	-	78	68	-	-
KV550C2	KV500UC2	M229	500	5.03 x 1.56 x 2.44	4870	1770	22.6	19.4	82	72	87	76
KV550C3	-	M230	610	5.03 x 1.69 x 2.67	5170	1950	24.4	-	81	71	-	-
KV650C2	KV550UC2	M230	610	5.03 x 1.69 x 2.67	5300	1950	21.9	19.9	80	70	-	-
KV715C2	KV600U	M230	610	5.03 x 1.69 x 2.67	5590	1950	19.8	18	85	75	-	-
KV770C2	KV640UC2	M230	610	5.02 x 1.63 x 2.67	5790	1950	18.3	17.1	85	75	89	79

(1) Also available in the following voltages: 240/415 V, 220/380 V, 127/220 V, 115/200 V.

(2) Also available in the following voltages: 254/440 V, 127/220 V, 120/208 V.

(3) Prime power in direct current for an unlimited number of annual operating hours in variable load applications, in accordance with ISO8528-1, a 10% overload capacity is available for a period of 1 hour every 12-hour period of operation, in accordance with ISO3046-1.

(4) Emergency standby power available for supplying emergency power in variable load applications in accordance with ISO8528-1, no overload available for this service.

(5) The dimensions and weights apply to an open generator set without options.

(6) Dry weight, without fuel.

SPECIFICATIONS

KH SERIES

250-825 kVA
227-760 kW



Unhoused Version - KH440



Soundproofed Version - KH600U

THREE-PHASE – UNHOUSED VERSION													
50 Hz, 230/400 V				60 Hz, 277/480 V				General					
Models ⁽¹⁾	kVA		Fuel Consumption At 75% Load, L/h	Models ⁽¹⁾	kW		Fuel Consumption At 75% Load, L/h	Engine			Unhoused Version ⁽⁵⁾		
	Prime ⁽³⁾	Standby ⁽⁴⁾			Prime ⁽³⁾	Standby ⁽⁴⁾		Types	Cyl	CC, L	Dimensions, L x W x H, m	Weight, kg ⁽⁶⁾	Fuel Tank, L
KH275	250	275	43.6	-	-	-	-	P126TI	6	11.1	2.90 x 1.30 x 1.67	2310	390
KH300	273	300	43.6	KH250U	227	250	52.3	P126TI	6	11.1	2.90 x 1.30 x 1.67	2400	390
KH330	300	330	47	KH300U	273	300	56	P126TI-II	6	11.1	3.16 x 1.34 x 1.59	2440	470
KH440	400	440	65.2	KH400U	364	400	74.7	P158LE	8	14.6	3.47 x 1.50 x 1.85	2945	500
KH550	500	550	83.4	KH500U	454	500	92.9	DP158LD	8	14.6	3.47 x 1.50 x 1.85	3173	500
KH630	573	630	94.2	-	-	-	-	DP180LA	10	18.3	3.47 x 1.63 x 1.72	3623	610
KH700	634	697	103.8	KH600U	546	600	114.2	DP180LB	10	18.3	3.47 x 1.63 x 2.12	3633	610
KH830	750	825	119.1	KH750U	691	760	134.4	DP222LC	12	21.9	3.47 x 1.63 x 2.19	4080	610

THREE-PHASE – SOUNDPROOFED VERSION												
Models ⁽¹⁾		Soundproofed Version				Enclosures With Double Wall Base Frame			Sound Levels, 50 Hz		Sound Levels, 60 Hz	
50 Hz	60 Hz	Types	Fuel Tank, L	Dimensions, L x W x H, m	Weight, kg	Fuel Tank, L	50 Hz, h Maximum Run Time	60 Hz, h Maximum Run Time	dB(A) @ 1m	dB(A) @ 7m	dB(A) @ 1m	dB(A) @ 7m
KH275	-	M227	390	4.00 x 1.38 x 2.15	3160	950	21.8	-	83	73	-	-
KH300	KH250U	M227	390	4.00 x 1.38 x 2.15	3250	950	21.8	18.2	83	73	88	78
KH330	KH300U	M228	470	4.48 x 1.41 x 2.43	3540	1368	29.1	24.4	82	72	85	75
KH440	KH400U	M229	500	5.03 x 1.56 x 2.44	4125	1770	27.2	23.7	85	75	89	79
KH550	KH500U	M229	500	5.03 x 1.56 x 2.44	4257	1770	21.2	19.1	84	74	90	80
KH630	-	M230	610	5.03 x 1.69 x 2.67	5146	1950	20.7	18.3	88	78	-	-
KH700	KH600U	M230	610	5.03 x 1.69 x 2.67	5381	1950	18.8	17.1	88	78	92	82
KH830	KH750U	M230	610	5.03 x 1.69 x 2.67	5720	1950	16.4	14.5	86	76	92	82

(1) Also available in the following voltages: 240/415 V, 220/380 V, 127/220 V, 115/200 V.

(2) Also available in the following voltages: 254/440 V, 127/220 V, 120/208 V.

(3) Prime power in direct current for an unlimited number of annual operating hours in variable load applications, in accordance with ISO8528-1, a 10% overload capacity is available for a period of 1 hour every 12-hour period of operation, in accordance with ISO3046-1.

(4) Emergency standby power available for supplying emergency power in variable load applications in accordance with ISO8528-1, no overload available for this service.

(5) The dimensions and weights apply to an open generator set without options.

(6) Dry weight, without fuel.

STANDARD FEATURES AND OPTIONS

MODULAR GENERATORS, AN ADAPTED RESPONSE

For each of its generator, Kohler offers a large range of options to facilitate maintenance operations, enhance user safety and provide solutions for specific requirements or unusual environments.

OPTION SPECIFICATIONS BY RANGE

	KK Series	KM Series	KD Series	KV Series	KH Series
Protection of hot parts	CEL02	CEL02	CEL02	CEL02	CEL02
Diesel separator pre-filter	FD05	FD05	FD05	•	FD05
Battery isolating switch	EN16	EN16	EN16	EN16	EN16
Automatic pack	CA303/CA403	CA303/CA403	CA303/CA403	CA404	CA404
Electronic control	EN01		EN01	•	•
Automatic filling kit	FD08 ⁽¹⁾	FD08 ⁽¹⁾	FD08 ⁽¹⁾	FD08 ⁽¹⁾	FD08 ⁽¹⁾
Drainage pump	EN04	EN04	EN04	•	EN04
Analog measurements display	CA307/CM407	CA307/CM407	CA307/CM407	•	•
Oversized alternator	X	AO001B ⁽²⁾	AO001B ⁽³⁾	AO001B ⁽⁴⁾	AO001B ⁽⁵⁾
Air discharge duct	CN03	CN03	CN03	CN03	CN03
9dB(A) silencer in open version	• ⁽⁶⁾	• ⁽⁶⁾	• ⁽⁶⁾	• ⁽⁶⁾	• ⁽⁶⁾
High run time, double wall base frame	FD02*	FD02*	FD02	FD02	FD02
Base frame with 48-hour tank	X	X	FD03	X	X
40dB(A) silencer	EN09	EN09	EN09	EN09	EN09

• Standard X: Not available. CEL02: option code

* for all generators except for M125 enclosures

(1) Not possible on 48-hour and double wall base frame

(2) Option not available for 3000 rpm

(3) Option not available for KD20UM, KD30UM, KD44, KD70U, KD80U and KD88 generators and on the soundproofed version of the KD220C2

(4) Option not available on the soundproofed versions of KV600UC2 and KV700C2 sets

(5) Option not available for the KH700 and on the soundproofed versions of the KH500U, KH550 and KH600U sets

(6) 29 dB(A) and 40 dB(A) silencer available as an option

1 ANALOG MEASUREMENTS DISPLAY (CA307/CA407)

This option enables the oil pressure and the water temperature to be displayed on the APM303 or APM403 screen. In some cases, this is on an additional display.

1



2 AIR DISCHARGE DUCT (EN12/EN08/EN09)

Metal elbow-shaped box section which enables the air to be discharged from the top of the enclosure towards the front of the generator set.

2



3 BATTERY ISOLATING SWITCH (EN16)

Battery isolator rotary handle for easy isolation of the battery during generator set storage.

3



4 PROTECTION FOR HOT PARTS (CEL02)

Protective grille for hot parts (exhaust manifold) on the diesel engine and rotating parts. This option ensures the user's safety during maintenance operations. Mandatory option within the European community (European directive).

5 OVERSIZED ALTERNATOR (A0001B)

For use under heavy electrical or climate constraints, this option allows greater operating flexibility for a better guarantee of performance.

6 DRAINAGE PUMP (EN04-EN05)

Manual oil drainage pump for easier servicing of the generators during maintenance operations. Standard option on enclosed generator sets.

7 SILENCER ON OPEN VERSION

For "open" version generators, a choice of 3 noise reduction levels is available (9dB(A), 29dB(A), 40dB(A)), to meet the constraints of various installations.

AUTOMATIC PACK (EN20)

This includes a preheating resistor and a battery charger. It is an engine preheating device which uses an electrical resistor. Preheating is self-adjusting up to 200 KVA and thermostat-controlled for outputs above this. This option is ideal for generators used as back-up. It allows the coolant to be maintained at a temperature of 40°C to facilitate emergency start-up and save time when commissioning the generators.

8 DIESEL SEPARATOR PRE-FILTER (FD05)

This is a pre-filter enabling water contained in diesel to be removed, thereby improving the engine's protection.

FILTER WITH INTERCHANGEABLE CARTRIDGE (EN02)

Dry air filters with removable and interchangeable cartridges for dusty environments which can be removed and cleaned with blown air, if required. This option is required when the generator is used in dusty environments.

9 AUTOMATIC FILLING KIT (FD08)

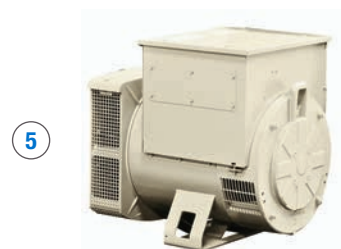
This is an automatic kit for filling the tank from an external storage tank. It includes:

- An electric pump with automatic control governed by a gauge with level contacts
- A manual back-up pump

Extended use is possible without having to top up the diesel. This is particularly well suited for use in isolated areas.

ELECTRONIC CONTROL (EN01)

Electronic speed regulator with control unit enabling precise control of speed, and therefore the frequency, to +/- 1%. This regulator is factory fitted as standard on some engines. This option allows the quality of the signal to be improved for better operation of sensitive equipment.



GENERATOR SET CONTROLS

Kohler offers a unique range of specific control units: APM303, APM403 and APM802. These control units offer a wide range of possibilities, from simplified running to the option of managing the most complex coupling operations, and can be adapted to suit every need.

	APM303	APM403	APM802
KK Series	•	O	X
KM Series	•	O	X
KD Series	•	O	X
KV Series	X	•	O
KH Series	X	•	O

COMPARISON OF GENERATOR SET CONTROLS

SPECIFICATIONS	APM303	APM403	APM802
DISPLAY			
Frequency	•	•	•
Phase to neutral voltages	•	•	•
Phase to phase voltages	•	•	•
Currents	•	•	•
Active/reactive/apparent power	•	•	•
Power factor	•	•	•
Battery voltage	•	•	•
Battery current	X	O	O
Start-up delay	•	•	•
Fuel level	•	•	•
Oil pressure	•	•	•
Coolant temperature	•	•	•
Oil temperature	X	O	O
Total working hours counter	•	•	•
Partial working hours counter	X	•	•
Total active/reactive energy meter	•	•	•
Genset speed	•	•	•
FAULT INFORMATION (FAULT OR ALARM)			
Min/max alternator voltage	•	•	•
Min/max alternator frequency	•	•	•
Min/max battery voltage	•	•	•
Overload and/or short circuit	•	•	•
Active/reactive power return	X	•	•
Oil pressure	•	•	•
Coolant temperature	•	•	•
Speed too high	•	•	•
Speed too low	•	•	•
Low fuel level	•	•	•
Emergency stop fault	•	•	•
Non-starting fault	•	•	•
Charging alternator fault	•	•	•
Differential relay activation fault	O	•	•
General alarm	•	•	•
General fault	•	•	•
Sound alarm	O	•	•

• Standard
O Option
X Not available

SPECIFICATIONS	APM303	APM403	APM802
OPERATION			
Power ON	O	•	X
Manual generator set starting	•	•	•
Automatic generator set starting	•	•	•
Generator set shut down	•	•	•
Emergency stop	•	•	•
Navigation in colour touch-screen menu	X	X	•
Navigation in menu using wheel	X	•	X
Navigation in menu using button	•	X	X
Speed adjustment	O	O	•
Voltage adjustment	O	O	•
Dual frequency	X	O	O
Delayed start programming	X	•	•
Multilingual using pictograms	•	•	X
Multilingual text	X	•	•
CONNECTIVITY			
Ethernet port (website)	X	•	•
RS485 (JBUS protocol)	•	•	•
Engine CAN Bus (J1939)	O	•	•
USB port (config and software downloading)	•	•	•
COUPLING			
Under load	X	O	•
Shut down	X	X	•
Droop distribution of active and reactive power	X	O	•
Parallel line distribution of active and reactive power	X	X	•
CAN Bus distribution of active/reactive power	X	X	•
Power plant wattmeter control	X	X	•
Temporary coupling of Out/Return grid	X	O	•
Power plant coupling to grid (temporary, permanent, etc.)	X	X	•
GENERAL			
Downloading of a customized configuration via USB port	•	•	•

APM303 CONTROLLER

The Essentials Made Simple.

The APM303 is a versatile unit equipped with a particularly intuitive LCD screen. It offers high-quality basic functions, allowing easy and reliable operation of your generator. This unit is mounted on a console on all generators designed for LV industrial applications with and without source transfer switch.

FUNCTIONS

- Manual and automatic mode (with auto start input)
- Generator set protection and management
- Electrical measurements, including power
- Mechanical value measurements
- Automatic voltage and frequency detection
- Secure configuration on the APM303 or on PC

CONNECTIVITY

- 2 configurable reports
- RTU RS485 Modbus
- USB port

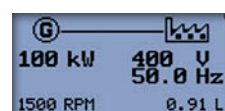
OPERATION CONDITIONS

- Front of IP54 controller
- Protection against humidity and dust with tropicalized varnish

*Advanced Power Management

MEASUREMENTS

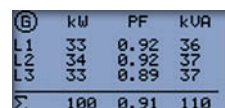
LCD display examples



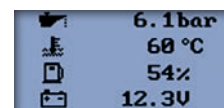
overview display



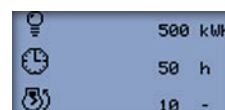
current and voltage



output



mechanical values



meters



log and alerts

Ergonomic, universal LCD screen

Alarm/fault report indicator

STOP/START/AUTO buttons and AUTO mode indicator light



Screen scroll buttons

Generator set operating light

APM403 CONTROLLER

Intuitive and Versatile.

The APM403 controller is simple to use and comes with built in intuitive configurations to cater to different backup system setups. It is available in 2 different models. The APM403S is specially design to offer the best command and control capabilities for a single generator set operation. The APM403P offers the additional versatility of paralleling multiple generators together or even parallel together with mains.

The APM403 controller is designed for low voltage (LV) industrial diesel generator sets and its remote management and supervision functions allow monitoring and even operation of the generators at anytime, anywhere. Added geolocation function using GPS allows the operator to accurately locate the installation sites of generators and manage a pool of generators over a large area.

CONTROL

- Basic control for speed and voltage

MEASUREMENTS AND DISPLAYS

- Mechanical and electrical measurement and display

SOLO OR PARALLEL

- Single generator set control or parallel with up to 8 generatos

SAFETY AND PROTECTION

- Built in electrical protection features

POWER SUPPLY

- 12V and 24V

AUTOMATIC MODE

- Auto start and stop, depending on load requirement

REMOTE MANAGEMENT AND MONITORING

- Offers real time monitoring and even control of a single or multiple generators

MULTILINGUAL SUPPORT

- English, French, Spanish, Italian, Dutch, German, Brazilian Portuguese, Turkish, Norwegian, Polish, Chinese, Russian



APM403P Front Panel

APM802 DIGITAL CONTROLLER

Technology so advanced, it's easy.

The APM802 command/control system is specifically designed for operating and monitoring power plants for markets including hospitals, data centers, banks, oil and gas sector, IPP and mining. The Human Machine Interface (HMI), designed in collaboration with a company specializing in interface design, facilitates operations with a large 100% touch screen. The pre-configured system for power plant applications features a brand new customization function which complies with the international standard IEC 61131-3.

OPERATING SCREEN

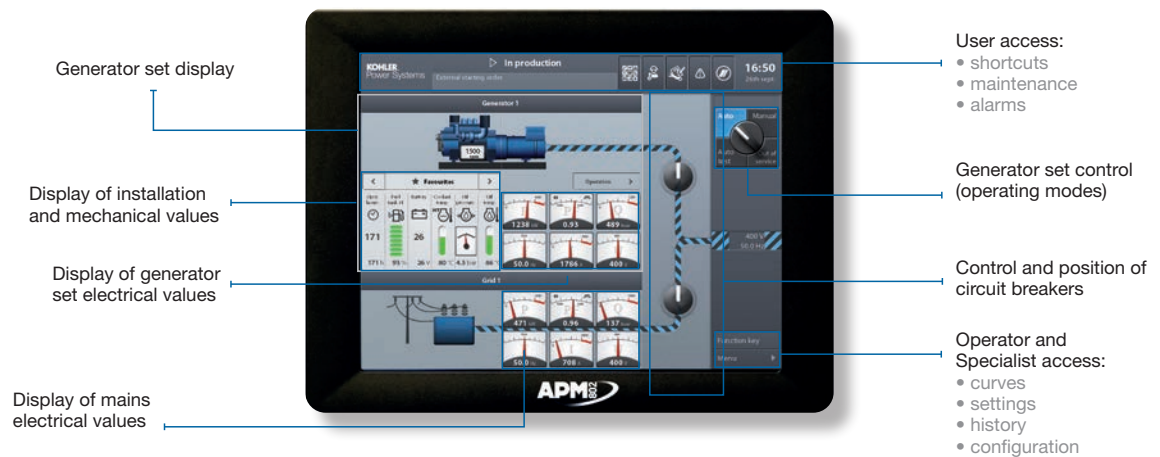
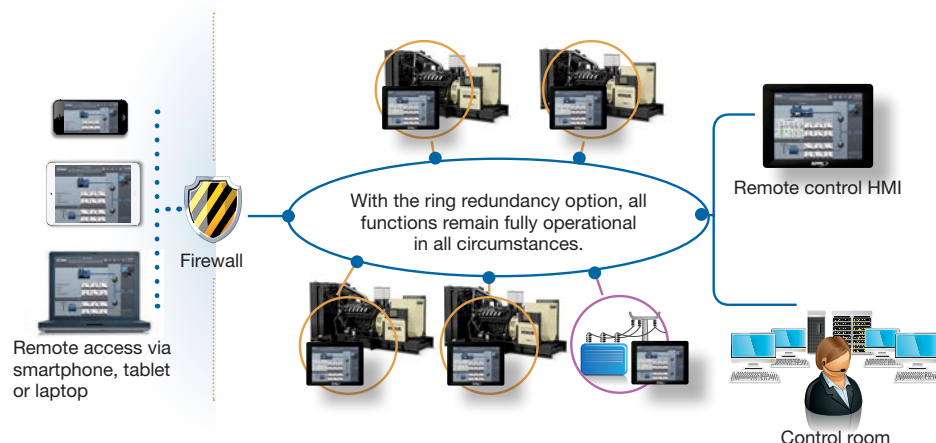


Illustration may vary from actual product.

ETHERNET COMMUNICATION: INNOVATIVE AND PATENTED

Communication via APM802 guarantees a high level of equipment availability and facilitates the remote control of the HMI for an enhanced user experience. Additionally, various connections can be made via the Ethernet using fibre optics or combined with copper wire. System communications are separated from external communications to allow full control of risk management.



The ring is created by several Ethernet segments and groups together regulation and PLC communications.

AUTOMATIC TRANSFER SWITCHES

They protect your power. And your business.

KOHLER® advanced transfer switches—featuring ATS controllers—are loaded with technology to ensure transfer of power from the utility to the generator and back. When the grid fails, power is transferred to the standby system. And then it's back to business as usual.

STANDARD FEATURES

Multiple Applications

Find the perfect option. KOHLER transfer switches are available in standard, bypass-isolation and service-entrance configurations with open, closed and programmed transition operating modes, from 30 to 4000 amps.

Seamless System Integration

Everything works together. KOHLER transfer switches are designed to interface perfectly with KOHLER generators and paralleling switchgear.

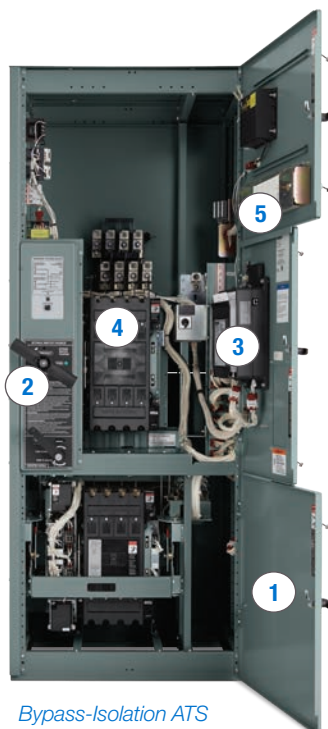
Advanced Communications

Every transfer switch comes fully loaded with the technology to do the job. Ethernet and Modbus communications capabilities are available.

Certified Packages

Transfer switches are UL-listed and have CSA and IBC certifications available.

- ① **CERTIFIED ENCLOSURES**
Meet NEMA Type 1, 3R, 12, 4 and 4X enclosure standards
- ② **BYPASS OPERATION**
Eliminates interruption to the loads during maintenance
- ③ **ATS DIGITAL CONTROLLER**
Provides a full array of features including communications, I/O, load management and other advanced functionality
- ④ **HEAVY-DUTY CONTACTOR**
Choose from any breaker, specific breaker or current limiting fuse-rated mechanisms
- ⑤ **AVAILABLE ACCESSORIES**
Anticondensation heater, voltage-surge suppressor, line-to-neutral voltage monitoring, seismic certification and more



Bypass-Isolation ATS



Service-Entrance ATS



Standard ATS

KOHLER GENUINE PARTS

The best way to protect your power.



STOCK OUR PARTS BOOST YOUR SERVICE

Be sure you can deliver top-tier service by stocking plenty of KOHLER® genuine parts.

BASIC MAINTENANCE PARTS

Maintenance that can be carried out without dismantling parts from the engine.

Examples: oil filter, fuel filter, belts and fuses

ADVANCED MAINTENANCE AND REPAIR PARTS

Maintenance involving partial disassembly of the engine.

Examples: voltage regulator, water pump and controller parts, etc.

MAIN OVERHAUL PARTS

Maintenance requiring complete disassembly of the engine.

Examples: top- or lower-end rebuild

To Order

To order KOHLER genuine or a parts display stand, contact your Aftermarket Parts Coordinator at sales.sg@kohler.com



Southeast Asia (Regional HQ)
Singapore +65 6264 6422
sales.sg@kohler.com

Learn more at **KohlerPower.com**

PRINTED IN SINGAPORE 10/22 G12-748 © 2022 BY KOHLER CO.